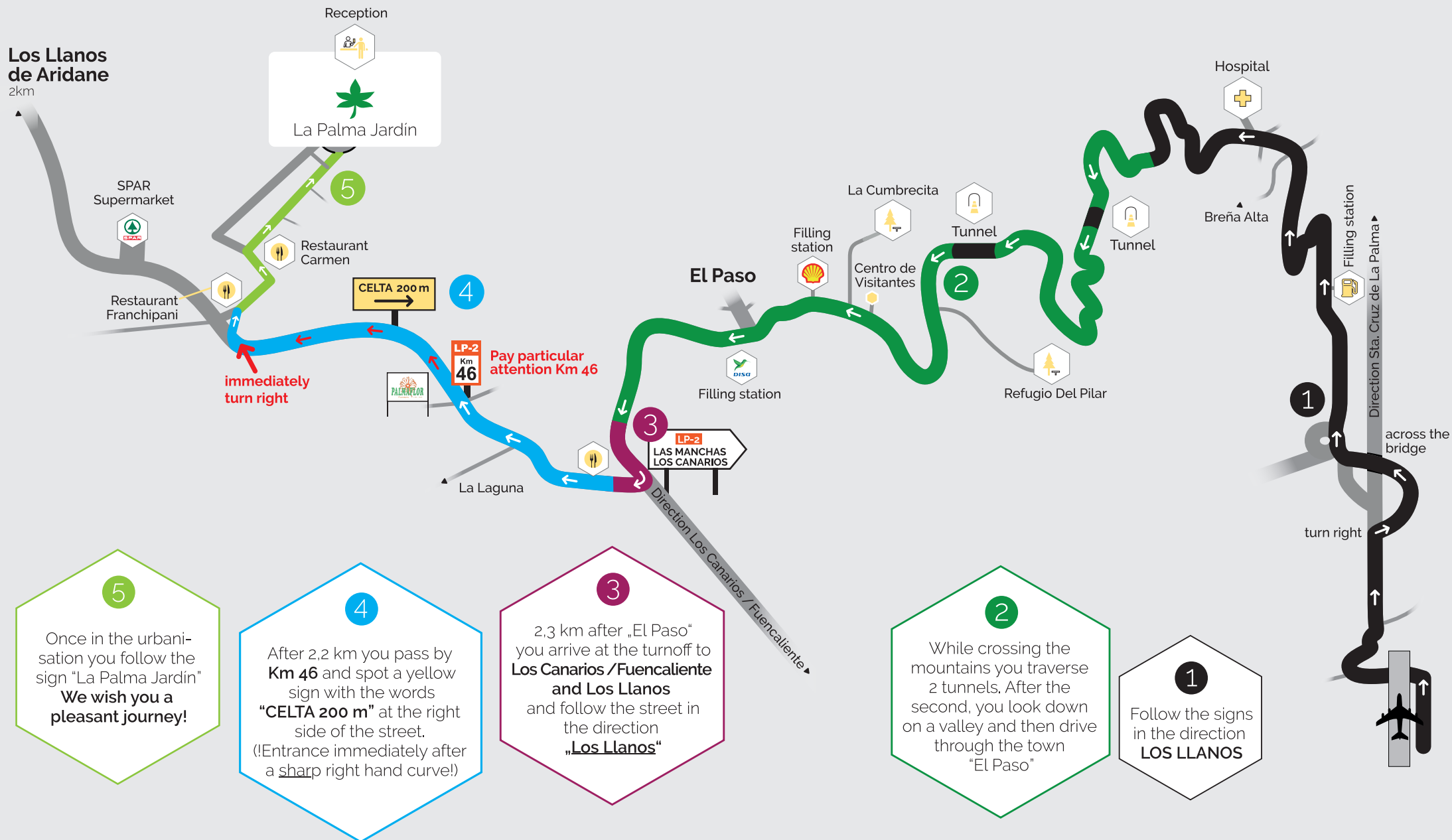


Welcome to La Palma!

The distance between the airport and the entrance of **CELTA**, where **"La Palma Jardín"** is situated, is approx. 33 km.
After your arrival please drive directly to the bungalow-complex, you will be expected at the reception desk.



5

Once in the urbanisation you follow the sign "La Palma Jardín"
We wish you a pleasant journey!

4

After 2.2 km you pass by **Km 46** and spot a yellow sign with the words **"CELTA 200 m"** at the right side of the street.
(!Entrance immediately after a sharp right hand curve!)

3

2.3 km after „El Paso“ you arrive at the turnoff to **Los Canarias /Fuencaliente** and follow the street in the direction **„Los Llanos“**

2

While crossing the mountains you traverse 2 tunnels. After the second, you look down on a valley and then drive through the town **"El Paso"**

1

Follow the signs in the direction **LOS LLANOS**